

HONG KONG 2015 WASTE STATISTICS

At a Glance

Municipal Solid Waste (MSW)

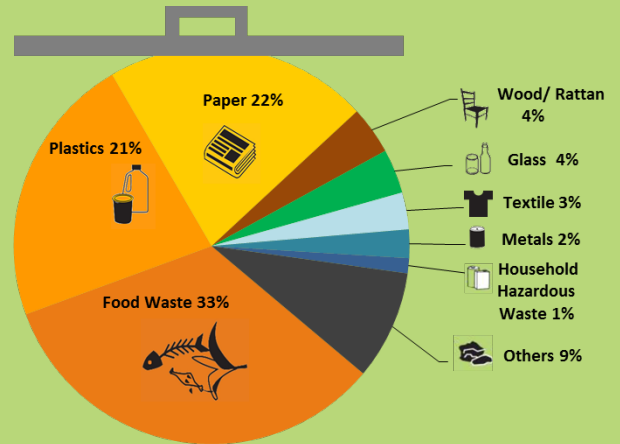


35%
Recovered for recycling

65%
Disposed of at landfills
at a rate
of **1.39Kg/day per capita**



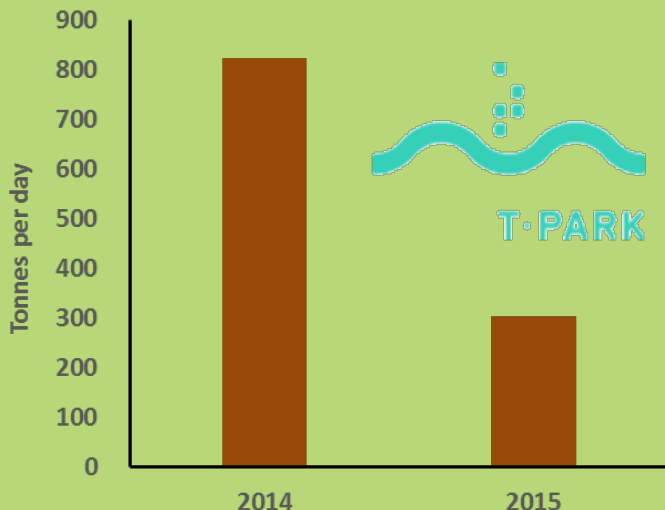
Composition of MSW Disposed of at Landfills



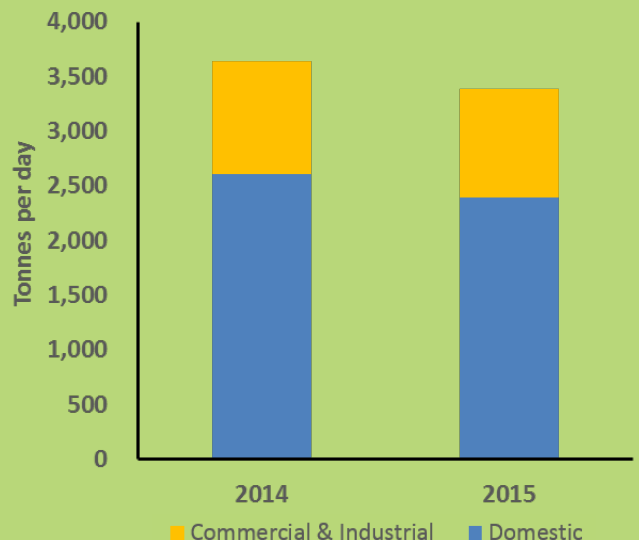
Total disposal quantity: 10,159 tonnes per day

Note: Others include bulky items and other putrescible/miscellaneous materials.

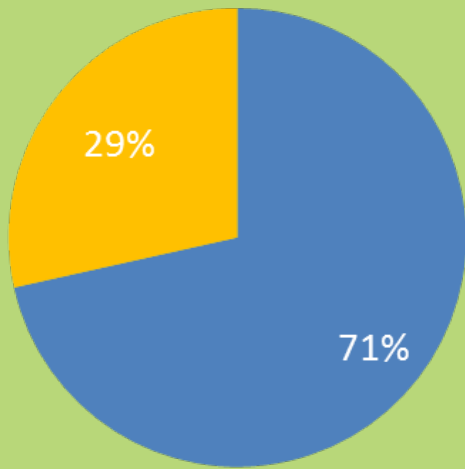
Dewatered Sewage Sludge Disposed of at Landfills Reduced by 63%



Food Waste Disposed of at Landfills Reduced by 7%

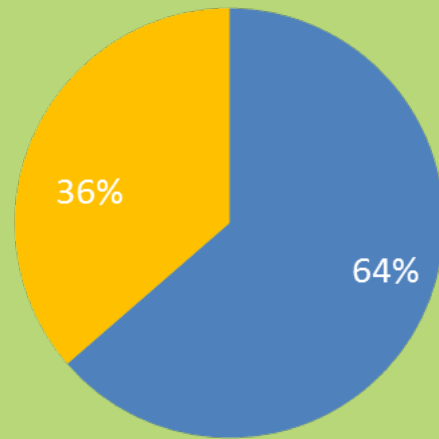


Source of MSW Disposed of at Landfills



Commercial & Industrial Domestic

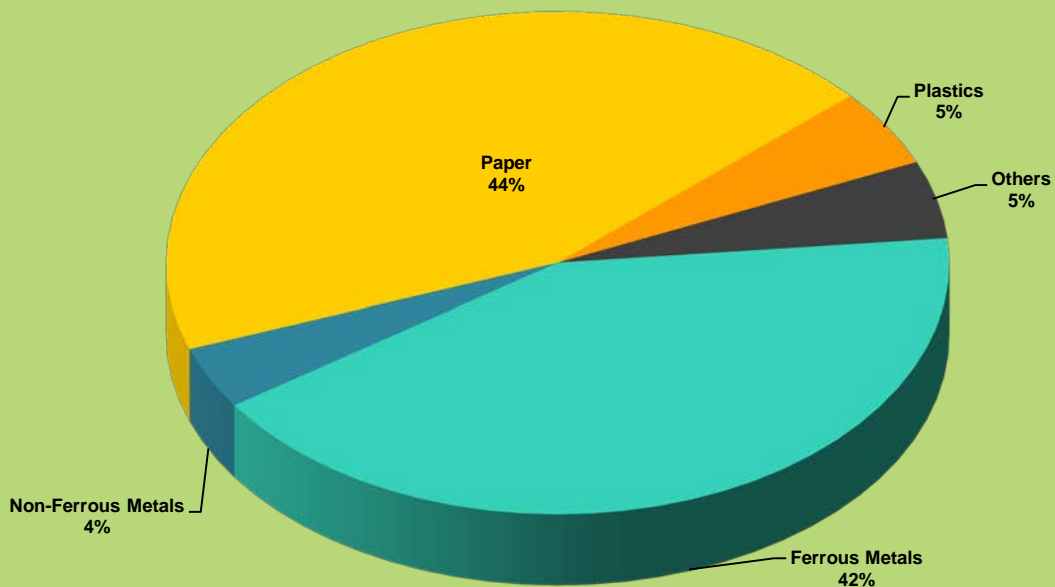
2006



Commercial & Industrial Domestic

2015

Recovered Recyclable Materials in 2015



Total quantity: 2.03 million tonnes (0.76 Kg/day per capita)

Note: Others include glass, wood, rubber tyres, textiles, food waste, and electrical and electronic equipment.